



Middleborough Road, Coventry, CV1 4DE

Loveitts

PART OF | SHELDON BOSLEY KNIGHT

Property Description

Loveitts are proud and excited to welcome to the market this rare opportunity to acquire a fantastic rental investment. This property has six self contained flats all ranging in size and specification of two bedrooms, one bedroom and a bedsit. Current rental income in the region of £50,000 PA.

Middleborough Road is conveniently located close to the Coventry City centre and the train station.

Call us now for more information and to arrange a viewing.



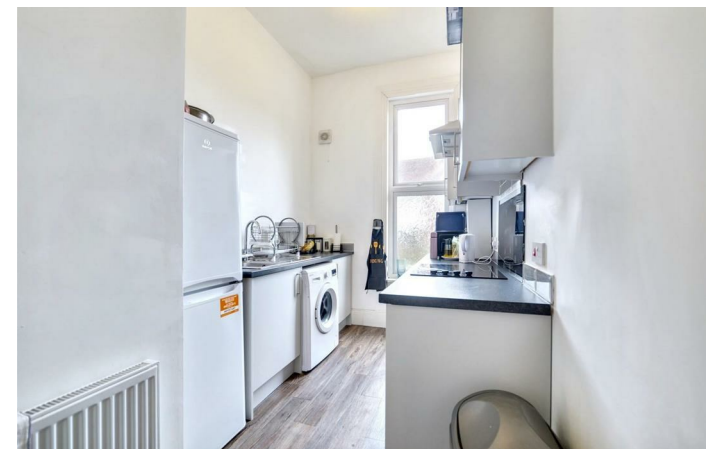
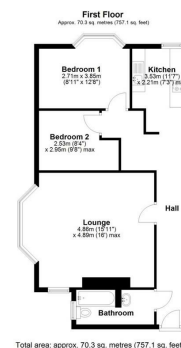
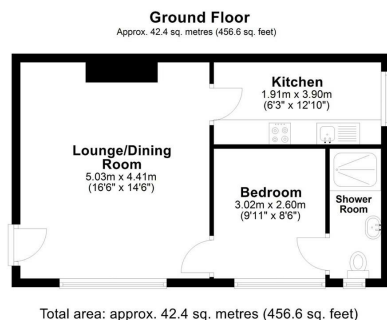
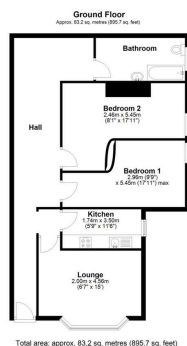


Key Features

- Fantastic and Unique investment opportunity
- Six self contained flats set over three floors
- Mixture of one and bedroom apartments
- Rental Investment of approx £55,000 per annum
- Parking to the side
- Basement with further rental potential
- Call us now to arrange a viewing
- EPC - TBC

**Offers In Excess Of
£700,000**



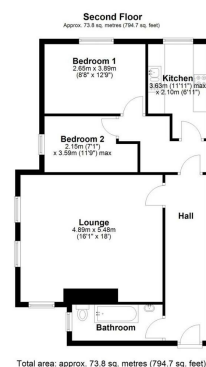


EPC Rating -

Tenure - Freehold

Council Tax Band -

Local Authority
Coventry City Council



We routinely refer clients to both our recommended Legal Firm and a panel of Financial Services Providers. It is your decision whether you choose to deal with these companies. In making that decision, you should know that we receive a referral fee



To view this property please contact our Loveitts Coventry (Sales) office
on 02476 258421

Loveitts

PART OF | SHELDON BOSLEY KNIGHT